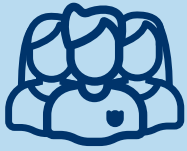


Harm reduction worker safety during the COVID-19 global pandemic

NATIONAL RAPID GUIDANCE RECOMMENDATIONS - PPE RECOMMENDATIONS FOR STAFF

THIS DOCUMENT DOES NOT SUPERSEDE A PROVIDER'S CLINICAL EXPERIENCE AND DECISION-MAKING SKILLS.

VERSION 1 GUIDANCE DOCUMENT



Screeners

Medical mask or a physical barrier.



Administration

Medical mask or 2m distance.

Staff Involved in Direct Care



Staff should be mask fitted for N-95 masks.



AGMP

N-95 mask, gown, gloves, eye protection. Other staff should keep 2m distance



No AGMP

Medical mask, gloves, eye protection.

Staff Involved in Cleaning and Disinfecting



After an AGMP

Medical mask, gloves, gown, eye protection.



General

Medical mask, gloves, gown.

PPE: Personal Protective Equipment
AGMP: Aerosol Generating Medical Procedures